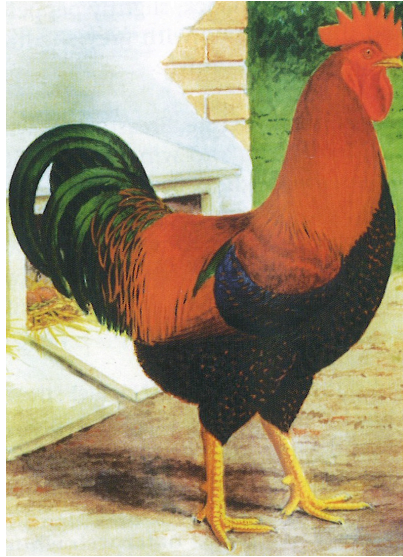


# *VP&K Inc.*

## **SOFTFEATHER FEATURE SHOW**

**Saturday 2nd JULY 2022**

*Covid Safe application no 6990*



## **SHEPPARTON SHOWGROUNDS**

**Benalla Road Shepparton**

### **JUDGES:**

**Mr Ken Bergin - All Light Breed & Mr Stuart Fraser – All Heavy Breed**

### **Dutch, Welsummer and Plymouth Rock Feature**

*Life Members:* Mr Alf Woods, *Mr Neil Penny,*

• *This show is held in conjunction with the Wyandotte, Pekin, Leghorn, Australorp, Rhode Island, Orpington & Langshan Clubs.*

*Their secretaries are:*

**Pekin Bantam Club** - Mr. John Suters PO Box 83 Heywood 3304

Steve Parker southwestgenetics@gmail.com

**Leghorn Club of Vic** - Mr Neil Penny 2 Maggies Lane Ruffy 3665 0427 505291

**Wyandotte Club of Victoria** - Mrs Erika Nash 3790 Great Ocean Road Johanna 3238 0425 808371

**Vic Australorp Club** - Nathan Macfarlane, 59 Scenic Drive Warragul Vic 3820, ph. 03 56232880

**Vic Langshan Club** - Mr Nick Fenaughty, 52 Elsie Jones Drive Mooroopna 3629, 0400 229025

**Orpington Club of Australia, Southern Branch** – Trevor Dent 0418 838660 & Sonya Ford

**Rhode Island Club of Vic** – Mr Tony Milton PO Box 202 Coldstream Vic 3770 0418 385500

Breakfast – Egg & bacon sandwiches from 7.30am, and BBQ Lunch will be available at a reasonable cost.

## GENERAL INSTRUCTIONS

Anyone wishing to **pen birds on Friday night may do so between the hours of 1pm and 5.00pm**. If you wish to avail yourself of these penning hours, please indicate on entry forms. This allows the stewards to leave early if all known exhibitors have penned their birds, with tea at 6.30pm.

No exhibit may be removed before 3pm on show day but must be removed before 4pm and not after.

If entries exceed erected pens available, the club has the right to limit each exhibitor to 3 entries per class.

Judging to commence at 9.30am sharp. Birds must be penned by 9.00am.

The VP&K Inc. reserves the right to reject any entry without assigning a reason, **under the Rules & Regulations of the VPFA rule 33**. They also reserve the right to add or change Judges List.

A **JUNIOR** shall be aged between 6 and 16 years of age. A junior may show in both junior and senior classes if he/she so wishes. Junior entry fees only apply to Junior Classes. Juniors must pen their own birds on the day. **For junior entries please use class numbers attached and mark with a J**

ALL VICTORIAN EXHIBITORS MUST BE REGISTERED WITH THE VPFA Ltd.  
<http://www.vpfa.com.au> AND MEMBERSHIP NUMBER MUST BE QUOTED ON ENTRY FORM. Seniors \$95 with posted journal, \$55 with online journal, juniors \$55 with posted journal reduced to \$15 if email journal. VPFA Day pass \$15 Membership may be paid direct to,

Ms Anne Beaty, PO Box 928 Shepparton Vic 3632 or [admin@vpfa.com.au](mailto:admin@vpfa.com.au)

**VP&K Membership ..... Seniors \$10 ... Juniors \$5**

### ENTRY DETAILS

Members .....	\$2.50	..... Juniors	\$1.00
Non Members	\$4.00	..... Juniors	\$1.50

ENTRIES CLOSE: Wed 22 nd June 2022 with

**Email or post**  
[mholmes@financialmv.com.au](mailto:mholmes@financialmv.com.au)

Show Secretary,  
Mr. Michael Holmes  
PO Box 1327  
Wangaratta 3676  
0428 274273

Bank Account Details 633 108 1407 26894

**President:**  
Alf Woods

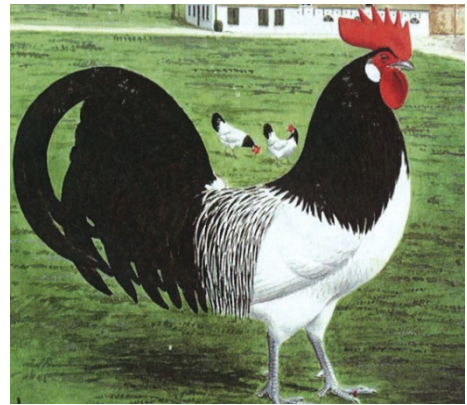
**Secretary:**  
Neil Penny  
0427 505291

**Accommodation at Shepparton:** A number of exhibitors & the judge's will be staying at the Overlander Motel, 97 Benalla Road Shepparton. If you wish to arrange your own accommodation on the Friday evening you can call The Overlander direct on 03 58215622. All exhibitors & judges from all six clubs are welcome to attend a dinner. Please call Michael on 0428 274273 (m) so I can arrange booking at The Overlander Hotel so we are all together on one table.

# CHAMPION Bird of Show Sash and Trophy

## Reserve Champion Bird of Show Sash & trophy

- Champion Heavy Standard Sash & Trophy
- Champion Light Standard Sash & Trophy
- Champion Heavy Bantam Sash & Trophy
- Champion Light Bantam Sash & Trophy
- Champion Junior Sash & Trophy
- Reserve Champion Heavy Standard Sash & Trophy
- Reserve Champion Light Standard Sash & Trophy
- Reserve Champion Heavy Bantam Sash & Trophy
- Reserve Champion Light Bantam Sash & Trophy
- Reserve Champion Junior Sash & Trophy



## Feature Sashes

- Champion & Reserve Imported Breed in APS Addendum 2016

**Welsummer** awards donated by the Welsummer Club of Australia:

Sash for Champion Welsummer

- Sash for Champion Welsummer Champion Male and Champion Female

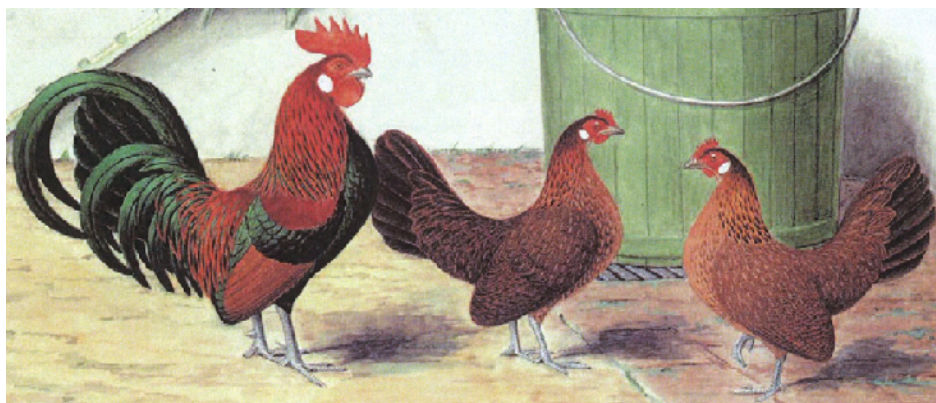
**Dutch** donated by Matthew Hicks & Jules Mills:

- Champion Dutch \$75
- Reserve Champion Dutch \$50
- Champion Gold \$25
- Champion Yellow \$25.

**Champion Plymouth Rock:**

- Champion Plymouth Rock – Peter Blake Memorial Shield

- *Please note, all Australorp, Langshan, Leghorn, Pekin, Rhode Island, Orpington, and Wyandotte entries are to be sent to their relevant club and will compete for own awards and above awards are only for breeds other than 7 specialist club shows.*



<b>STANDARD LIGHT SOFT FEATHER</b>	<b>COCK</b>	<b>HEN</b>	<b>CKL</b>	<b>PLT</b>
<b>Ancona</b> Black	500	501	502	503
Red	504	505	506	507
<b>Andalusian</b>	508	509	510	511
<b>Araucana</b> Black	512	513	514	515
Cuckoo	516	517	518	519
Lavender	520	521	522	523
White	524	525	526	527
Rumpless	528	529	530	531
<b>A.O.R.C.</b>	532	533	534	535
<b>Campine</b> Gold	536	537	538	539
Silver	540	541	542	543
Citrus	544	545	546	547
<b>Derbyshire Redcap</b>	548	549	550	551
<b>Hamburgh</b> Black	552	553	554	555
Blue	556	557	558	559
Gold Pencilled	560	561	562	563
Gold Spangled	564	565	566	567
Silver Pencilled	568	569	570	571
Silver Spangled	572	573	574	575
White	576	577	578	579
<b>A.O.R.C.</b>	580	581	582	583
<b>Houdan</b> <b>A.R.C.</b>	584	585	586	587
<b>La Bresse</b>	588	589	590	591
<b>Lakenvelder</b>	592	593	594	595
<b>Legbar</b> Golden	596	597	598	599
Silver	600	601	602	603
Cream	604	605	606	607
<b>Minorca</b> Black	664	665	666	667
Blue	668	669	670	671
White	672	673	674	675
<b>Old English Pheasant Fowl</b>	676	677	678	679
<b>Phoenix</b> <b>A.R.C.</b>	680	681	682	683
<b>Polish</b> Black	684	685	686	687
Chamois/Buff Laced	688	689	690	691

	laced Gold	692	693	694	695
	Laced Silver	696	697	698	699
	White (Bearded)	700	701	702	703
<b>Polish Bearded)</b>	White (Non	704	705	706	707
	White Crested Black	708	709	710	711
	White Crested Blue	712	713	714	715
	Frizzled	716	717	718	719
	<b>A.O.R.C.</b>	720	721	722	723
<b>Scots Grey</b>		724	725	726	727
<b>Sicilian Buttercup Golden</b>		728	729	730	731
	Silver	732	733	734	735
<b>A.O.R.C</b>		736	737	738	739
<b>Silkie Black</b>		740	741	742	743
	Blue	744	745	746	747
	Blue Partridge	748	749	750	751
	Partridge	752	753	754	755
	White	756	757	758	759
	AORC	760	761	762	763
	Bearded White	764	765	766	767
	Bearded AORC	768	769	770	771
<b>Spanish Black</b>		772	773	774	775
	Self-Blue	776	777	778	779
	White	780	781	782	783
<b>Sultan</b>		784	785	786	787
<b>Vorwerk</b>		788	789	790	791
<b>Welsummer Partridge</b>		792	793	794	795
	Silver Duckwing	796	797	798	799
<b>Yokohama A.R.C.</b>		800	801	802	803
<b>Any Other Breed/Variety Standard Light Soft Feather</b>		804	805	806	807

<b>STANDARD HEAVY SOFT FEATHER</b>	<b>COCK</b>	<b>HEN</b>	<b>CKL</b>	<b>PLT</b>
<b>Barnevelder Black</b>	1024	1025	1026	1027
Double Laced	1028	1029	1030	1031
<b>Barnevelder Partridge</b>	1032	1033	1034	1035
Silver	1036	1037	1038	1039

<b>Brahma</b> Buff		1040	1041	1042	1043
	Dark	1044	1045	1046	1047
	Gold	1048	1049	1050	1051
	Light	1052	1053	1054	1055
	White	1056	1057	1058	1059
	<b>A.O.R.C.</b>	1060	1061	1062	1063
<b>Cochin</b> Black		1064	1065	1066	1067
	Blue	1068	1069	1070	1071
	Buff	1072	1073	1074	1075
	Cuckoo	1076	1077	1078	1079
	Partridge	1080	1081	1082	1083
	White	1084	1085	1086	1087
	<b>A.O.R.C.</b>	1088	1089	1090	1091
<b>Crevecoeur</b> Black		1104	1105	1106	1107
<b>Dorking</b> Grey	Blue Silver	1108	1109	1110	1111
	Cuckoo	1112	1113	1114	1115
	Dark	1116	1117	1118	1119
	Red	1120	1121	1122	1123
	Silver Grey	1124	1125	1126	1127
	White	1128	1129	1130	1131
	Rosecomb	1132	1133	1134	1135
<b>Faverolles</b> Black		1136	1137	1138	1139
	Blue	1140	1141	1142	1143
	Buff	1144	1145	1146	1147
	Ermine	1148	1149	1150	1151
	Salmon	1152	1153	1154	1155
	White	1156	1157	1158	1159
	<b>A.O.R.C.</b>	1160	1161	1162	1163
<b>Frizzle</b> Black		1164	1165	1166	1167
	Black red	1168	1169	1170	1171
	Blue	1172	1173	1174	1175
	Buff	1176	1177	1178	1179
	Columbian	1180	1181	1182	1183
<b>Frizzle</b> Cuckoo		1184	1185	1186	1187
	Duckwing	1188	1189	1190	1191
	Red	1192	1193	1194	1195
	Spangle	1196	1197	1198	1199
	White	1200	1201	1202	1203
	<b>A.O.R.C.</b>	1204	1205	1206	1207

<b>La Fleche</b>		1208	1209	1210	1211
<b>Marans</b> Black		1212	1213	1214	1215
	Black Copper	1216	1217	1218	1219
	Blue Copper	1220	1221	1222	1223
	Dark Cuckoo	1224	1225	1226	1227
	English Cuckoo	1228	1229	1230	1231
	Golden Cuckoo	1232	1233	1234	1235
	Silver Cuckoo	1236	1237	1238	1239
	Wheaten	1240	1241	1242	1243
	<b>A.O.R.C.</b>	1244	1245	1246	1247
<b>New Hampshire</b>		1248	1249	1250	1251
<b>Plymouth Rock</b> Black		1280	1281	1282	1283
	Blue	1284	1285	1286	1287
	Buff	1288	1289	1290	1291
	Columbian	1292	1293	1294	1295
	Dark Barred	1296	1297	1298	1299
	Light Barred	1300	1301	1302	1303
	Partridge	1304	1305	1306	1307
	Silver Pencilled	1308	1309	1310	1311
	White	1312	1313	1314	1315
	<b>A.O.R.C.</b>	1316	1317	1318	1319
<b>Rhode Island</b> Comb	Red Rose	1320	1321	1322	1323
	Red Single Comb	1324	1325	1326	1327
	White Rose Comb	1328	1329	1330	1331
	White Single Comb	1332	1333	1334	1335
<b>Sussex</b> Brown		1336	1337	1338	1339
	Buff	1340	1341	1342	1343
	Coronation	1344	1345	1346	1347
	Light	1348	1349	1350	1351
	Red	1352	1353	1354	1355
	Speckled	1356	1357	1358	1359
	Silver	1360	1361	1362	1363
	White	1364	1365	1366	1367
	<b>A.O.R.C.</b>	1368	1369	1370	1371
<b>Transylvanian Naked Neck</b> Black		1372	1373	1374	1375
	Blue	1376	1377	1378	1379
	Buff	1380	1381	1382	1383
	Cuckoo	1384	1385	1386	1387
	Red	1388	1389	1390	1391
	White	1392	1393	1394	1395

<b>A.O.R.C.</b>	1396	1397	1398	1399
<b>Any Other Breed/Variety Standard Heavy Softfeather</b>	1492	1493	1494	1495

<b>SOFTFEATHER BANTAM LIGHT</b>	<b>COCK</b>	<b>HEN</b>	<b>CKL</b>	<b>PLT</b>
<b>Ancona</b>	2000	2001	2002	2003
Red	2004	2005	2006	2007
<b>Andalusian</b>	2008	2009	2010	2011
<b>Araucana Black</b>	2012	2013	2014	2015
Cuckoo	2016	2017	2018	2019
<b>Araucana Lavender</b>	2020	2021	2022	2023
White	2024	2025	2026	2027
Rumpless	2028	2029	2030	2031
<b>A.O.R.C.</b>	2032	2033	2034	2035
<b>Belgian Barbu d'Anvers Black</b>	2036	2037	2038	2039
Black Mottled	2040	2041	2042	2043
Blue	2044	2045	2046	2047
Blue Millefleur	2048	2049	2050	2051
Blue Mottled	2052	2053	2054	2055
Blue Quail	2056	2057	2058	2059
Cream	2060	2061	2062	2063
Cuckoo	2064	2065	2066	2067
Ermine	2068	2069	2070	2071
Fawn Ermine	2072	2073	2074	2075
Laced Blue	2076	2077	2078	2079
Lavender	2080	2081	2082	2083
Lavender Mottled	2084	2085	2086	2087
Lavender Quail	2088	2089	2090	2091
<b>Belgian Barbu d'Anvers Millefleurs</b>	2092	2093	2094	2095
Partridge	2096	2097	2098	2099
Porcelaine	2100	2101	2102	2103
Quail	2104	2105	2106	2107
Silver Millefleur	2108	2109	2110	2111
Silver Porcelaine	2112	2113	2114	2115
Silver Quail	2116	2117	2118	2119
White	2120	2121	2122	2123
<b>A.O.R.C.</b>	2124	2125	2126	2127
<b>Belgian Barbu d'Uccle Black</b>	2128	2129	2130	2131
Black Mottled	2132	2133	2134	2135
Blue	2136	2137	2138	2139



Blue Millefleur	2140	2141	2142	2143	
Blue Mottled	2144	2145	2146	2147	
Blue Quail	2148	2149	2150	2151	
Cream	2152	2153	2154	2155	
Cuckoo	2156	2157	2158	2159	
Ermine	2160	2161	2162	2163	
Fawn Ermine	2164	2165	2166	2167	
Laced Blue	2168	2169	2170	2171	
Lavender	2172	2173	2174	2175	
Lavender Mottled	2176	2177	2178	2179	
Lavender Quail	2180	2181	2182	2183	
Millefleurs	2184	2185	2186	2187	
Partridge	2188	2189	2190	2191	
Porcelaine	2192	2193	2194	2195	
Quail	2196	2197	2198	2199	
Silver Millefleur	2200	2201	2202	2203	
Silver Porcelaine	2204	2205	2206	2207	
Silver Quail	2208	2209	2210	2211	
White	2212	2213	2214	2215	
<b>A.O.R.C.</b>	2216	2217	2218	2219	
<b>Belgian Barbu de Watermael A.R.C.</b>	2220	2221	2222	2223	
<b>Belgian Barbu d'Everberg A.R.C.</b>	2224	2225	2226	2227	
<b>Belgian Barbu du Grubbe A.R.C.</b>	2228	2229	2230	2231	
<b>Campine</b> Gold	2232	2233	2234	2235	
Silver	2236	2237	2238	2239	
Citrus	2240	2241	2242	2243	
<b>Dutch</b> Red)	Gold Partridge(Black	2244	2245	2246	2247
Yellow Partridge(Duckwing)	2248	2249	2250	2251	
<b>Hamburgh</b> Black	2252	2253	2254	2255	
Blue	2256	2257	2258	2259	
Gold Pencilled	2260	2261	2262	2263	
Gold Spangled	2264	2265	2266	2267	
Silver Pencilled	2268	2269	2270	2271	
Silver Spangled	2272	2273	2274	2275	
White	2276	2277	2278	2279	
<b>A.O.R.C.</b>	2280	2281	2282	2283	
<b>Houdan A.R.C</b>	2284	2285	2286	2287	
<b>Japanese Black</b>	2288	2289	2290	2291	

Black Tailed Buff	2292	2293	2294	2295
Black Tailed White	2296	2297	2298	2299
Buff Columbian	2300	2301	2302	2303
Blue	2304	2305	2306	2307
Birchen	2308	2309	2310	2311
Brown Red	2312	2313	2314	2315
Cuckoo	2316	2317	2318	2319
Greys	2320	2321	2322	2323
Lavender	2324	2325	2326	2327
Mottled	2328	2329	2330	2331
Red	2332	2333	2334	2335
Tri-Coloured	2336	2337	2338	2339
White	2340	2341	2342	2343
<b>A.O.R.C.</b>	2344	2345	2346	2347
<b>Japanese A.R.C.</b> Frizzled	2348	2349	2350	2351
<b>Lakenvelder</b>	2352	2353	2354	2355
<b>Legbar Cream</b>	2356	2357	2358	2359
Golden	2360	2361	2362	2363
Silver	2364	2365	2366	2367
<b>Minorca Black</b>	2424	2425	2426	2427
Blue	2428	2429	2430	2431
White	2432	2433	2434	2435
<b>Phoenix A.R.C.</b>	2436	2437	2438	2439
<b>Polish Black</b>	2440	2441	2442	2443
Chamois/Buff Laced	2444	2445	2446	2447
Gold Laced	2448	2449	2450	2451
Silver Laced	2452	2453	2454	2455
White (Bearded)	2456	2457	2458	2459
White (Non Bearded)	2460	2461	2462	2463
White Crested Black	2464	2465	2466	2467
White Crested Blue	2468	2469	2470	2471
Frizzled Polish	2472	2473	2474	2475
<b>A.O.R.C.</b>	2476	2477	2478	2479
<b>Rosecomb Black</b>	2480	2481	2482	2483
White	2484	2485	2486	2487
<b>A.O.R.C.</b>	2488	2489	2490	2491
<b>Sebright Golden</b>	2492	2493	2494	2495
Silver	2496	2497	2498	2499

<b>Sicilian Buttercup</b> Golden	2500	2501	2502	2503
Silver	2504	2505	2506	2507
<b>A.O.R.C.</b>	2508	2509	2510	2511
<b>Silkie</b> Black	2512	2513	2514	2515
Blue	2516	2517	2518	2519
Blue Partridge	2520	2521	2522	2523
Gold	2524	2525	2526	2527
Grey	2528	2529	2530	2531
Partridge	2532	2533	2534	2535
White	2536	2537	2538	2539
Bearded <b>A.R.C.</b>	2540	2541	2542	2543
<b>A.O.R.C.</b>	2544	2545	2546	2447
<b>Spanish</b> Black	2548	2549	2550	2551
Self-Blue	2552	2553	2554	2555
White	2556	2557	2558	2559
<b>Sultan</b>	2560	2561	2562	2563
<b>Vorwerk</b>	2564	2565	2566	2567
<b>Welsummer</b> Partridge	2568	2569	2570	2571
Silver Duckwing	2572	2573	2574	2575
<b>A.O.R.C.</b>	2576	2577	2578	2579
<b>Yokohama</b> <b>A.R.C.</b>	2580	2581	2582	2583
<b>Any Other Breed/Variety</b> <b>Sofffeather Bantam Light</b>	2584	2585	2586	2587

<b>SOFTFEATHER BANTAM HEAVY</b>	<b>COCK</b>	<b>HEN</b>	<b>CKL</b>	<b>PLT</b>
<b>Barnevelder</b> Black	3024	3025	3026	3027
Double Laced	3028	3029	3030	3031
Partridge	3032	3033	3034	3035
Silver	3036	3037	3038	3039
<b>A.O.R.C.</b>	3040	3041	3042	3043
<b>Brahma</b> Buff	3044	3045	3046	3047
Dark	3048	3049	3050	3051
Gold	3052	3053	3054	3055
Light	3056	3057	3058	3059
White	3060	3061	3062	3063
<b>A.O.R.C.</b>	3064	3065	3066	3067
<b>Dorking</b> Grey	3080	3081	3082	3083
Blue Silver	3080	3081	3082	3083
Cuckoo	3084	3085	3086	3087
Dark	3088	3089	3090	3091

	Red	3092	3093	3094	3095
<b>Dorking Grey</b>	Silver	3096	3097	3098	3099
	White	3100	3101	3102	3103
	Rosecomb	3104	3105	3106	3107
	<b>A.O.R.C.</b>	3108	3109	3110	3111
<b>Faverolles Black</b>		3112	3113	3114	3115
	Blue	3116	3117	3118	3119
	Buff	3120	3121	3122	3123
	Ermine	3124	3125	3126	3127
	Salmon	3128	3129	3130	3131
<b>Faverolles White</b>		3132	3133	3134	3135
	<b>A.O.R.C.</b>	3136	3137	3138	3139
<b>Frizzle Black</b>		3140	3141	3142	3143
	Black red	3144	3145	3146	3147
	Blue	3148	3149	3150	3151
	Buff	3152	3153	3154	3155
	Columbian	3156	3157	3158	3159
	Cuckoo	3160	3161	3162	3163
	Duckwing	3164	3165	3166	3167
	Red	3168	3169	3170	3171
	Spangle	3172	3173	3174	3175
	White	3176	3177	3178	3179
	<b>A.O.R.C.</b>	3180	3181	3182	3183
<b>La Fleche</b>		3184	3185	3186	3187
<b>Marans Black</b>		3188	3189	3190	3191
	Dark Cuckoo	3192	3193	3194	3195
	English Cuckoo	3196	3197	3198	3199
	Silver Cuckoo	3200	3201	3202	3203
	Golden Cuckoo	3204	3205	3206	3207
	Wheaten	3208	3209	3210	3211
	<b>A.O.R.C.</b>	3212	3213	3214	3215
<b>New Hampshire</b>		3216	3217	3218	3219
<b>Plymouth Rock Black</b>		3336	3337	3338	3339
	Blue	3340	3341	3342	3343
	Buff	3344	3345	3346	3347
	Columbian	3348	3349	3350	3351
	Dark Barred	3352	3353	3354	3355
	Light Barred	3356	3357	3358	3359
	Partridge	3360	3361	3362	3363

	Silver Pencilled	3364	3365	3366	3367
	White	3368	3369	3370	3371
	<b>A.O.R.C.</b>	3372	3373	3374	3375
<b>Rhode Island</b>	Red Rose Comb	3376	3377	3378	3379
	Red Single Comb	3380	3381	3382	3383
	White Rose Comb	3384	3385	3386	3387
	White Single Comb	3388	3389	3390	3391
<b>Sussex</b>	Brown	3392	3393	3394	3395
	Buff	3396	3397	3398	3399
<b>Sussex</b>	Coronation	3400	3401	3402	3403
	Light	3404	3405	3406	3407
	Red	3408	3409	3410	3411
	Speckled	3412	3413	3414	3415
	Silver	3416	3417	3418	3419
	White	3420	3421	3422	3423
	<b>A.O.R.C.</b>	3424	3425	3426	3427
<b>Transylvanian Naked Neck</b>	Black	3428	3429	3430	3431
	Blue	3432	3433	3434	3435
	Buff	3436	3437	3438	3439
	Cuckoo	3440	3441	3442	3443
	Red	3444	3445	3446	3447
	White	3448	3449	3450	3451
	<b>A.O.R.C.</b>	3452	3453	3454	3455
<b>Any Other Breed/Variety</b>	<b>Sofffeather Bantam Heavy</b>	3548	3549	3550	3551